

Changing Demographics in Minnesota

Implications for Natural Resources

Tom Gillaspy, State Demographer

Mn Dept of Administration

April, 2006

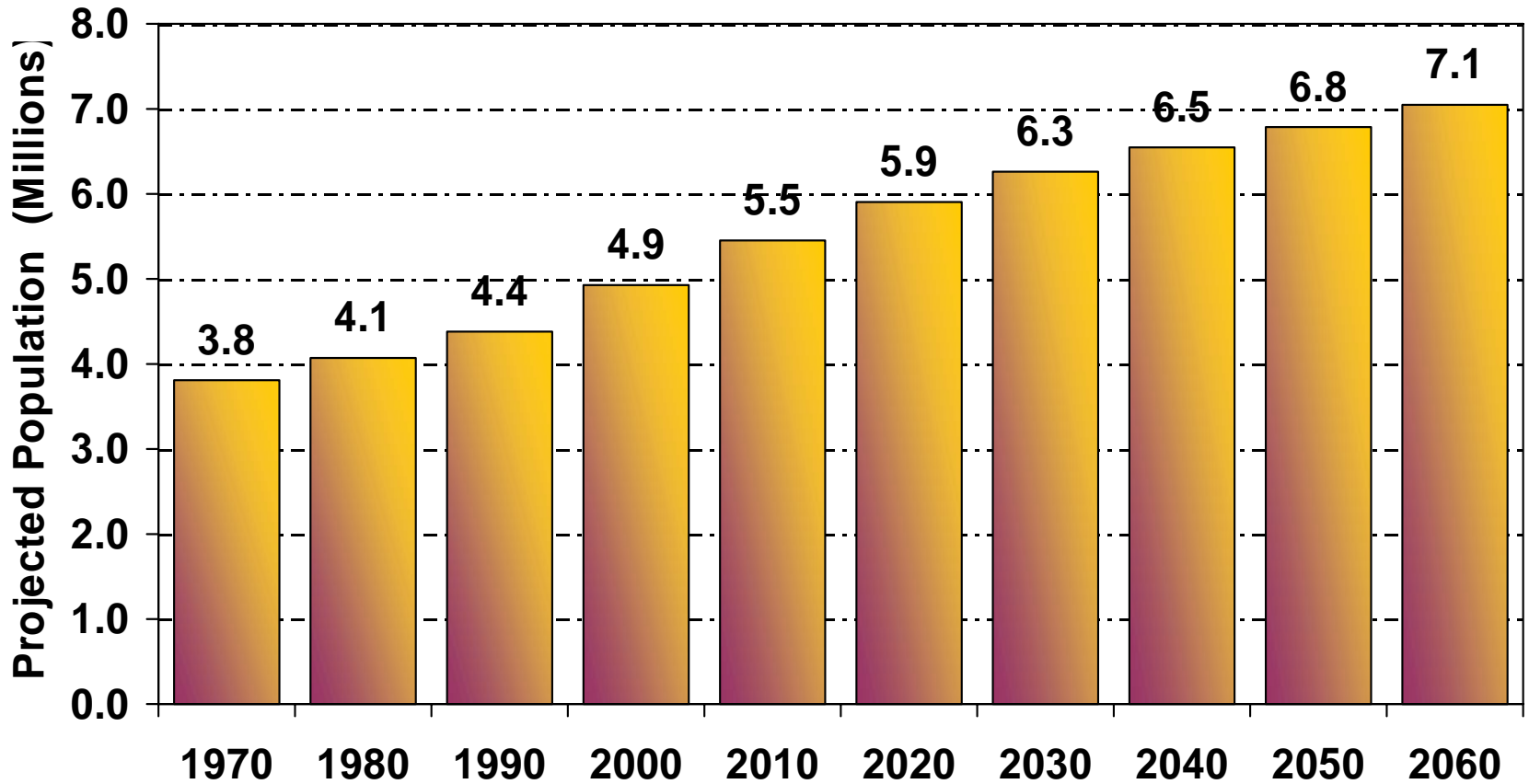
Minnesota Is A Remarkable State

- ☀️ **Growing**--our population growth consistently leads the frost belt
- ☀️ **Successful**--we rank with the leaders on many social and economic indicators
- ☀️ **Outdoor oriented**--the natural environment is an important part of many of our lives

Minnesota Ranks Highly In Many Social/Economic Indicators

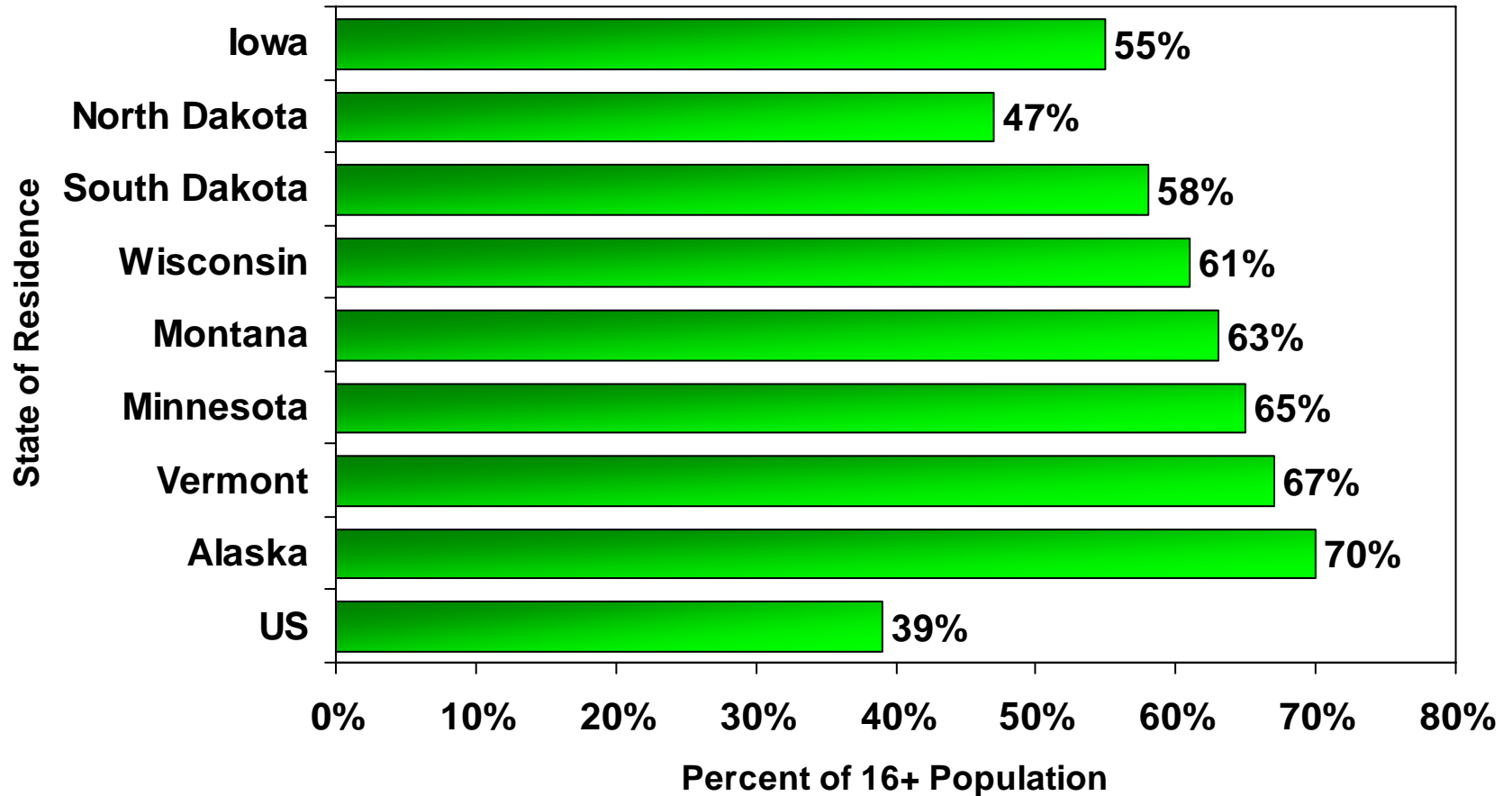
- **4th lowest poverty rate**
- **3rd percent of 16-64 employed**
- **1st percent with health insurance**
- **1st home ownership**
- **8th median family income**
- **10th in personal income per capita in 2004 - 25th in 1960**
- **11th Per capita disposable income**
- **4th percent of children in married couple families**
- **2nd percent with at least high school diploma**
- **1st United Health Foundation ranking of state healthiness**
- **3rd Kids Count 2005**
- **2nd Most Livable State by Morgan Quintno**

Minnesota Is Projected To Add 1.3 Million By 2030 & 2.1 Million By 2060



State Demographer projection

Minnesota Ranks Third In Percent Of Population Participating in Wildlife Associated Recreation



2001 National Survey of Fishing, Hunting & Wildlife Associated Recreation

Demographic Mega-trends Are Altering The Face Of America

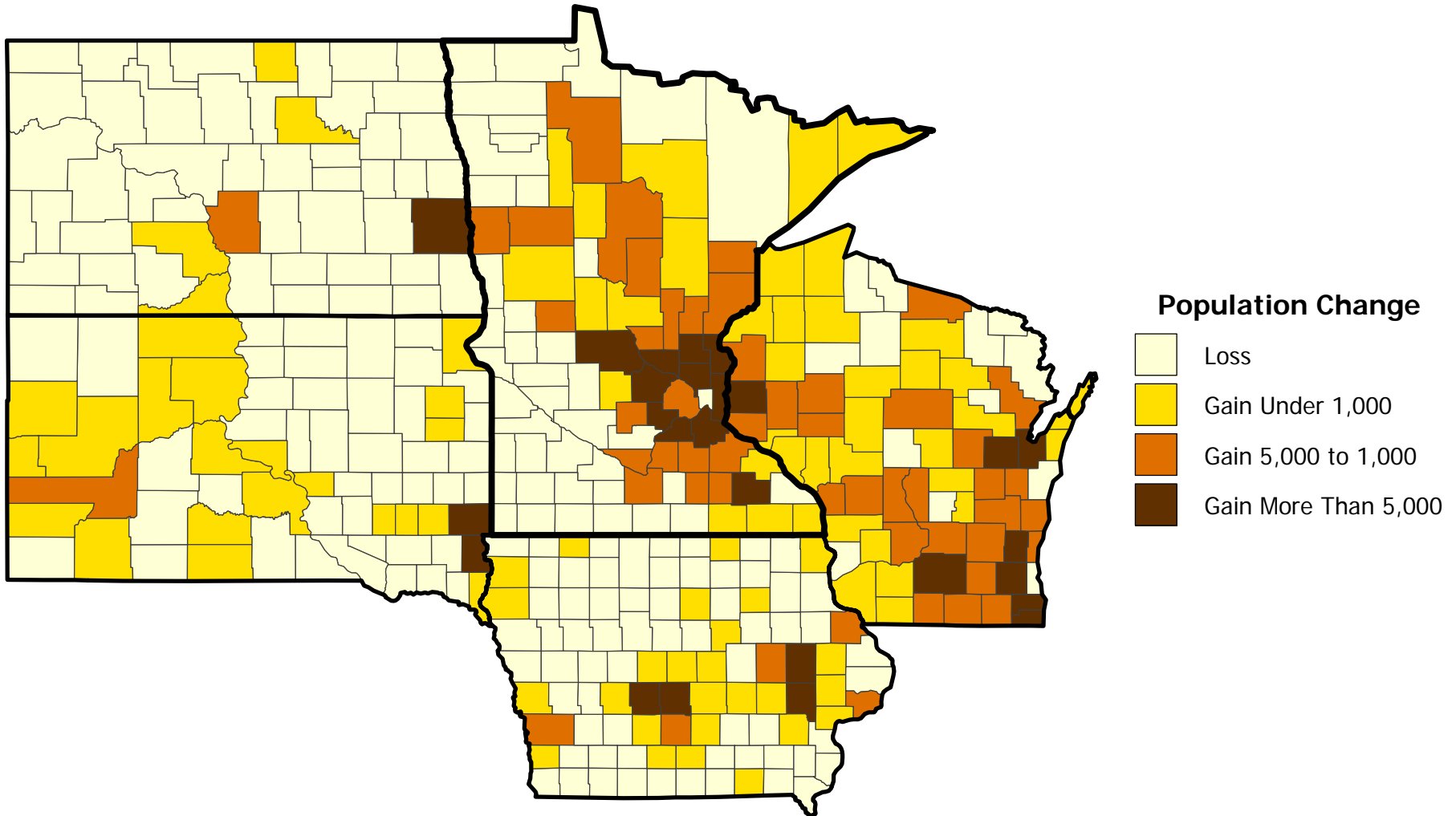
- 1. Less rural, more suburban, more lakeshore growth**
- 2. Increasingly diverse**
- 3. Aging**

Most Growth Is In The Twin City Suburban Doughnut

- **Twin Cities accounts for 78% of growth in the state**
- **Suburban ring is spreading outward**
- **7 of 13 metro counties in fastest 100 growing of the nation**
- **Rural and central city declines since 1950**
- **Increasing metropolitan and lakeshore development have implications for natural resource management**

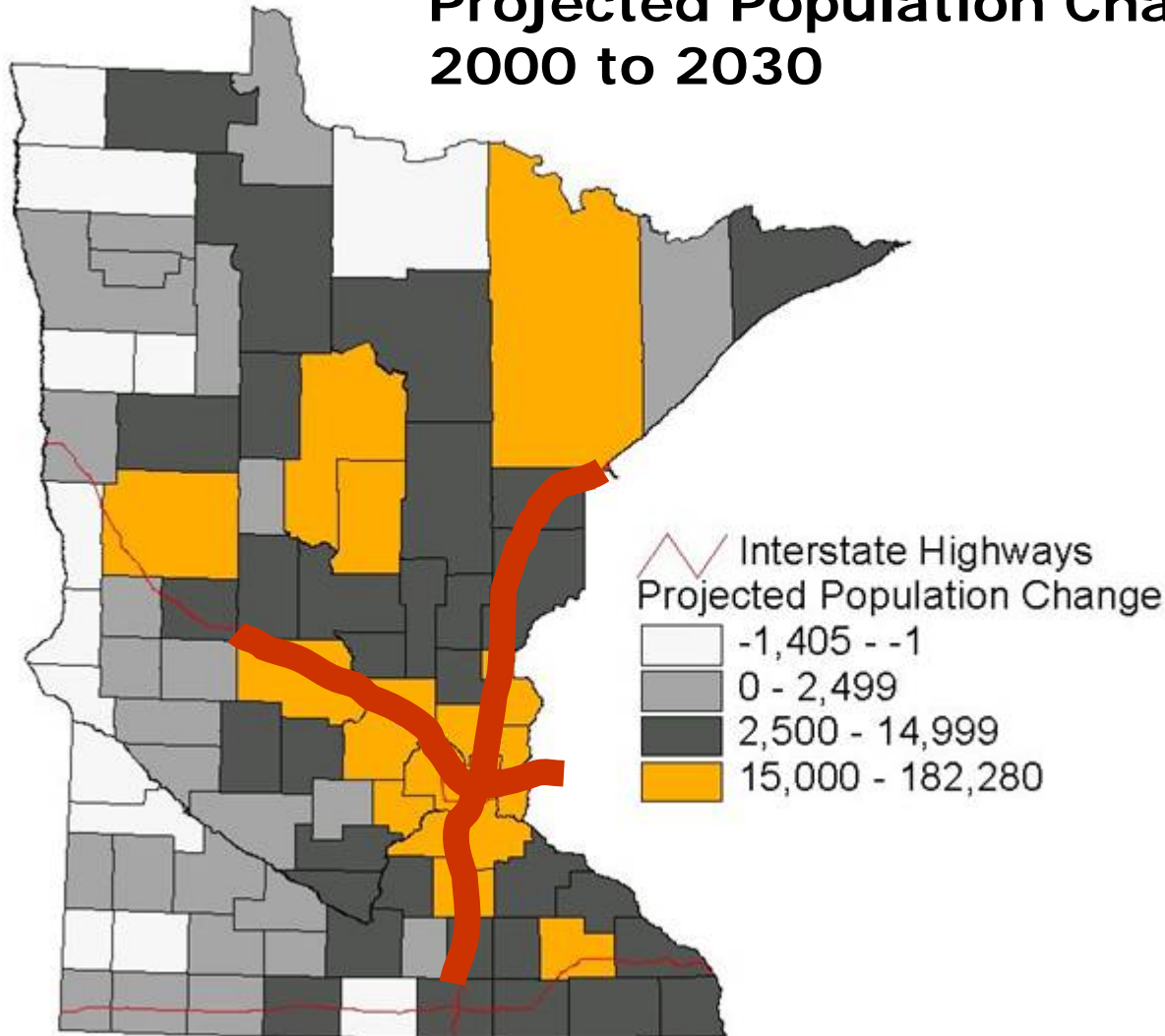
Population Change 2000-04

Census Bureau Estimate



Growth in Collar Counties Projected to Accelerate Over the Next 25 Years

Projected Population Change 2000 to 2030



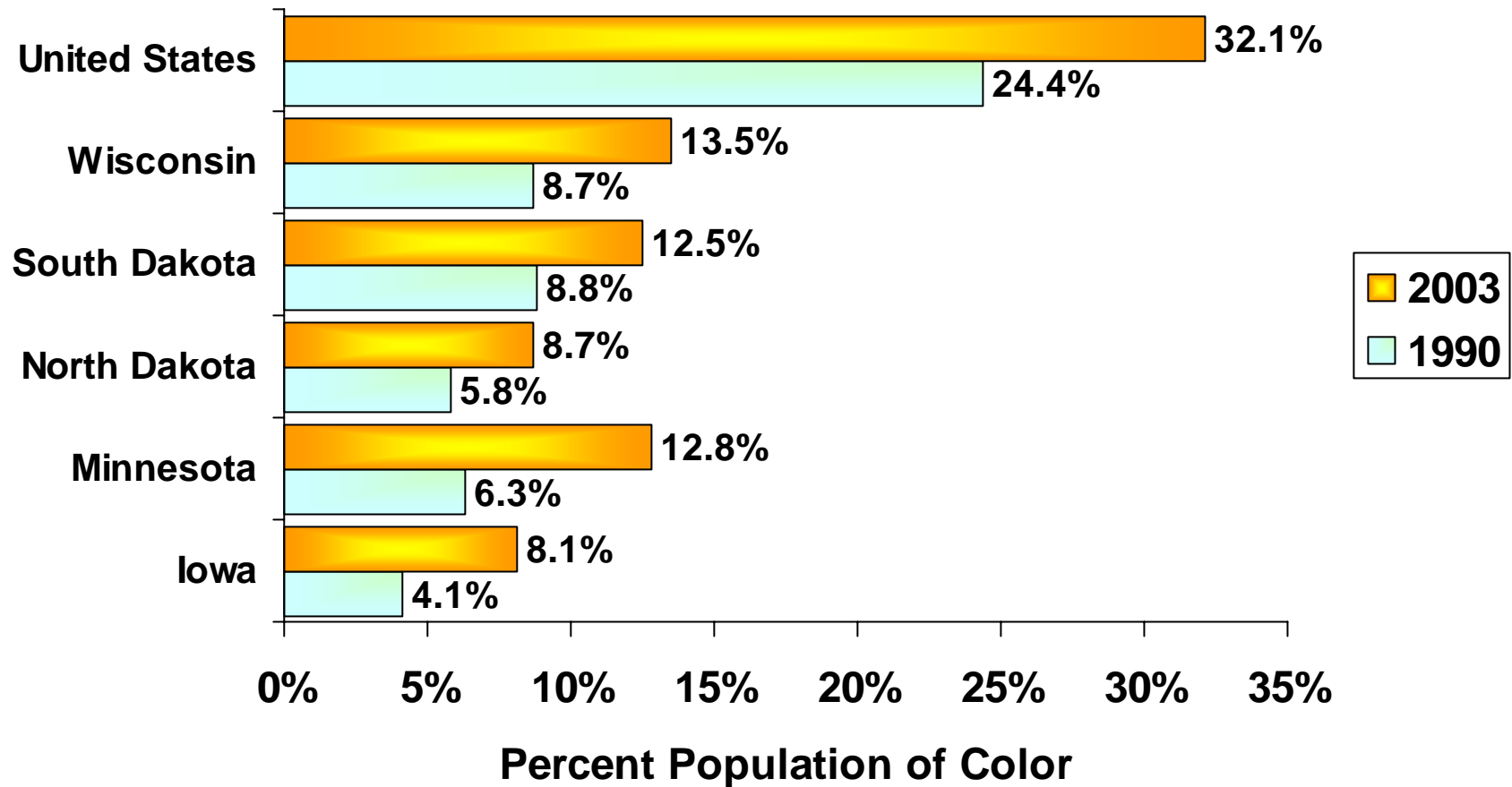
Development extends outward from the Twin Cities metro along major transportation routes such as I-94, I-35 and US 10.

Some growth corridor counties are expected to double in size over the next 25 years.

Minnesota is Growing More Diverse

- **Minnesota is one of the least diverse states in the nation—13% minority v US 32%**
- **Over half of total population growth this decade is minority.**
- **And this is related to age—new, diverse population is younger**

Upper Midwest Becoming More Diverse But Still Less Than The Nation

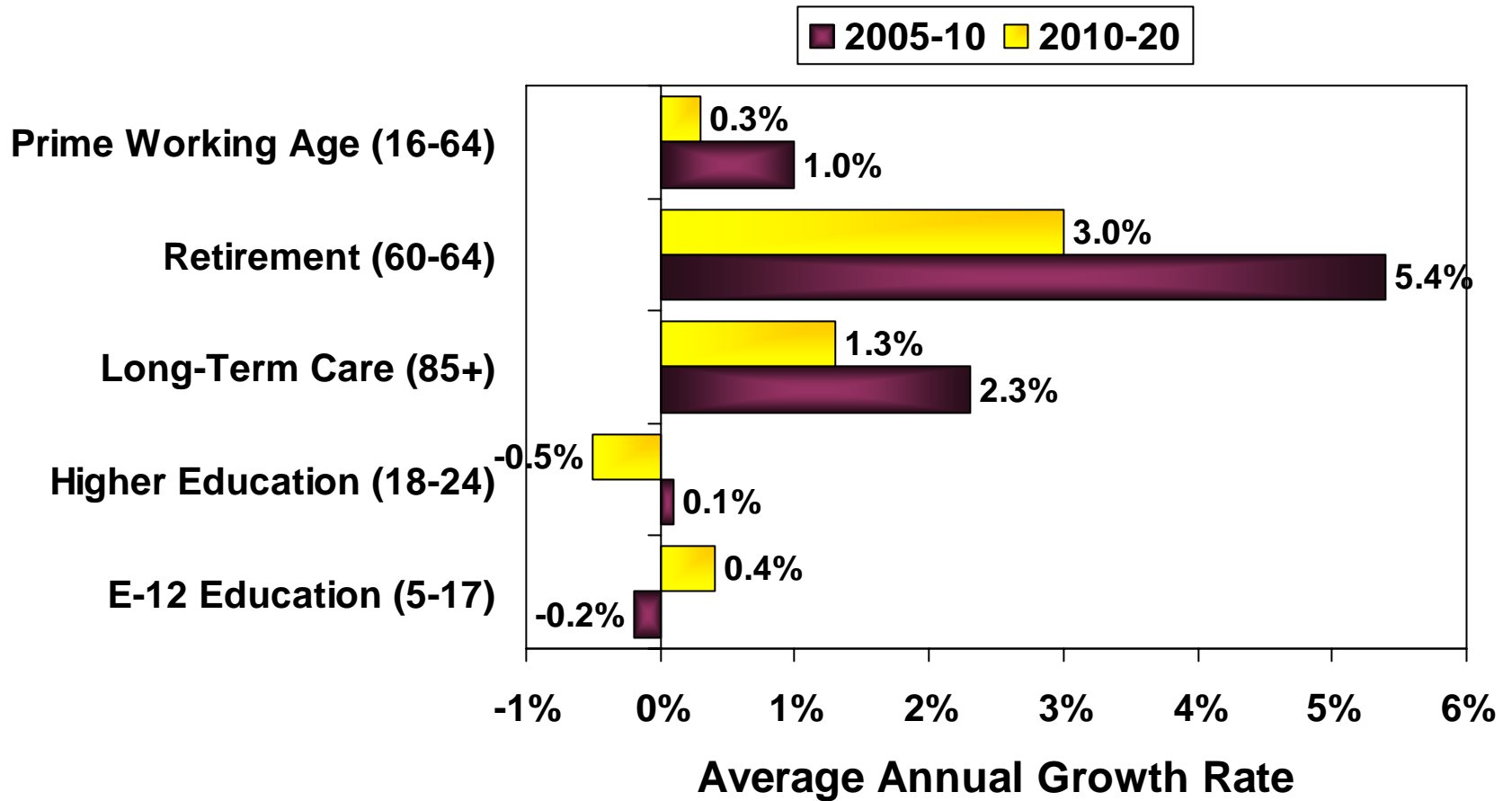


Note: Population except white alone, not Hispanic, 2003 Census Bureau estimate

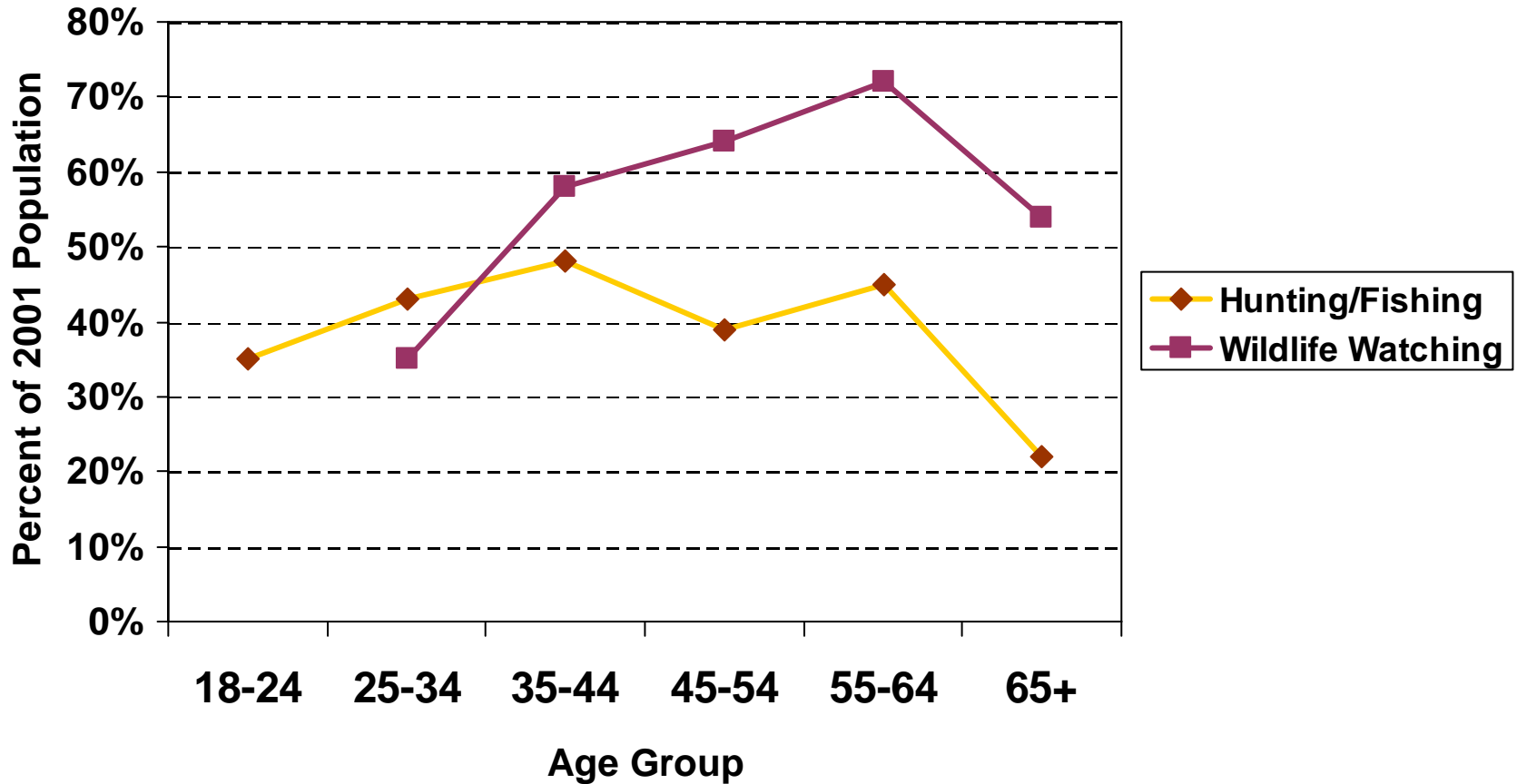
Aging Is The Dominant Demographic Trend In Minnesota And The Nation

- **It is not normal for a society to age**
- **Dramatic changes will be seen in 2008 and 2011 and beyond**
- **The leading edge of “Boomers” turn 60 this year!**
- **By 2020, the number of Minnesotans 65+ will increase by 53%. By 2030 it will double**
- **Aging, combined with growth and increased diversity will lead to challenges and opportunities not fully anticipated**

This Decade And Next Will See Dramatic Differences In Growth In Key Age Groups



Minnesotans Are More Likely To Watch Wildlife In Mid To Older Years Than To Hunt Or Fish

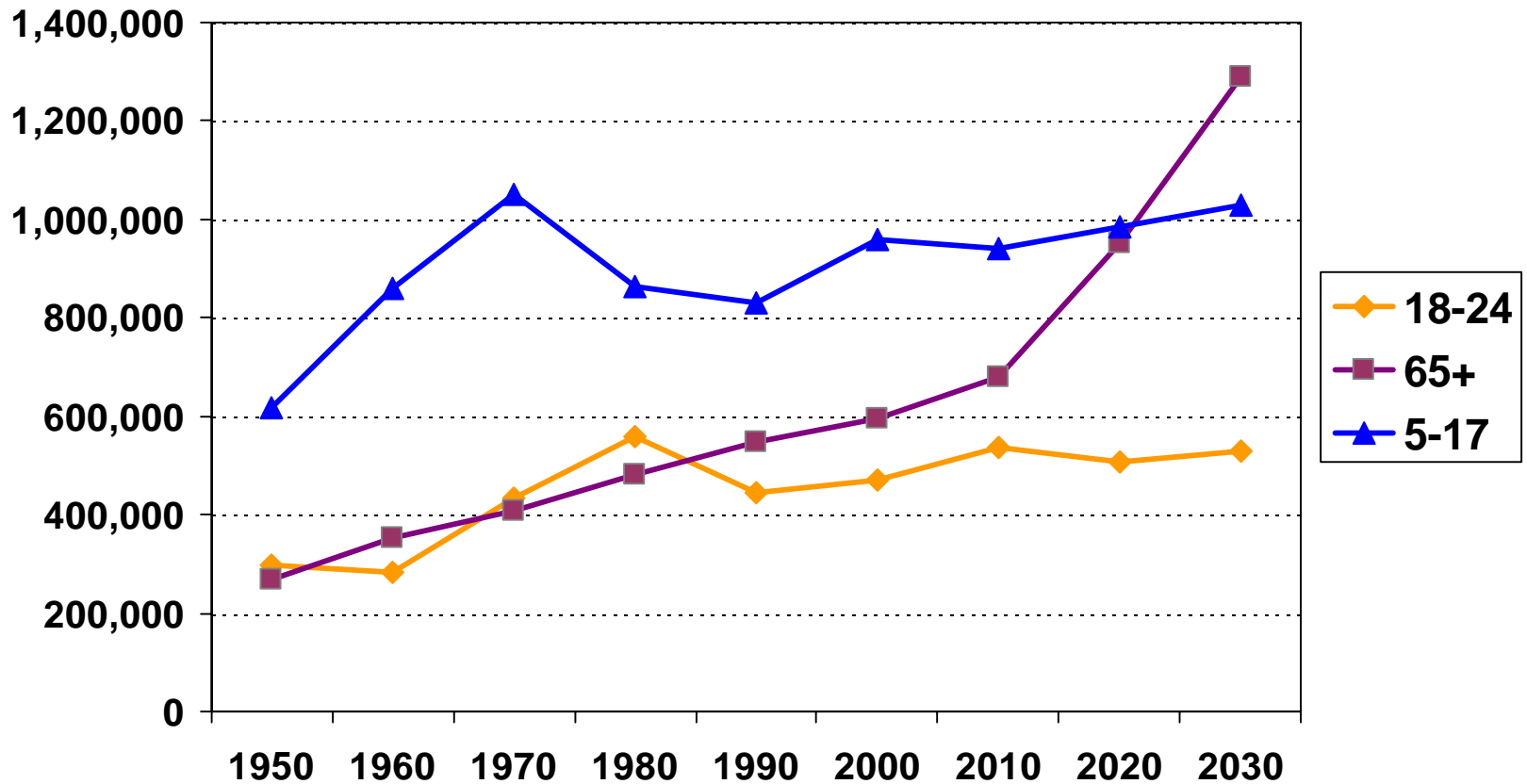


2001 National Survey of Fishing, Hunting & Wildlife Associated Recreation

The Boom Generation Starts Turning 65 in 2011

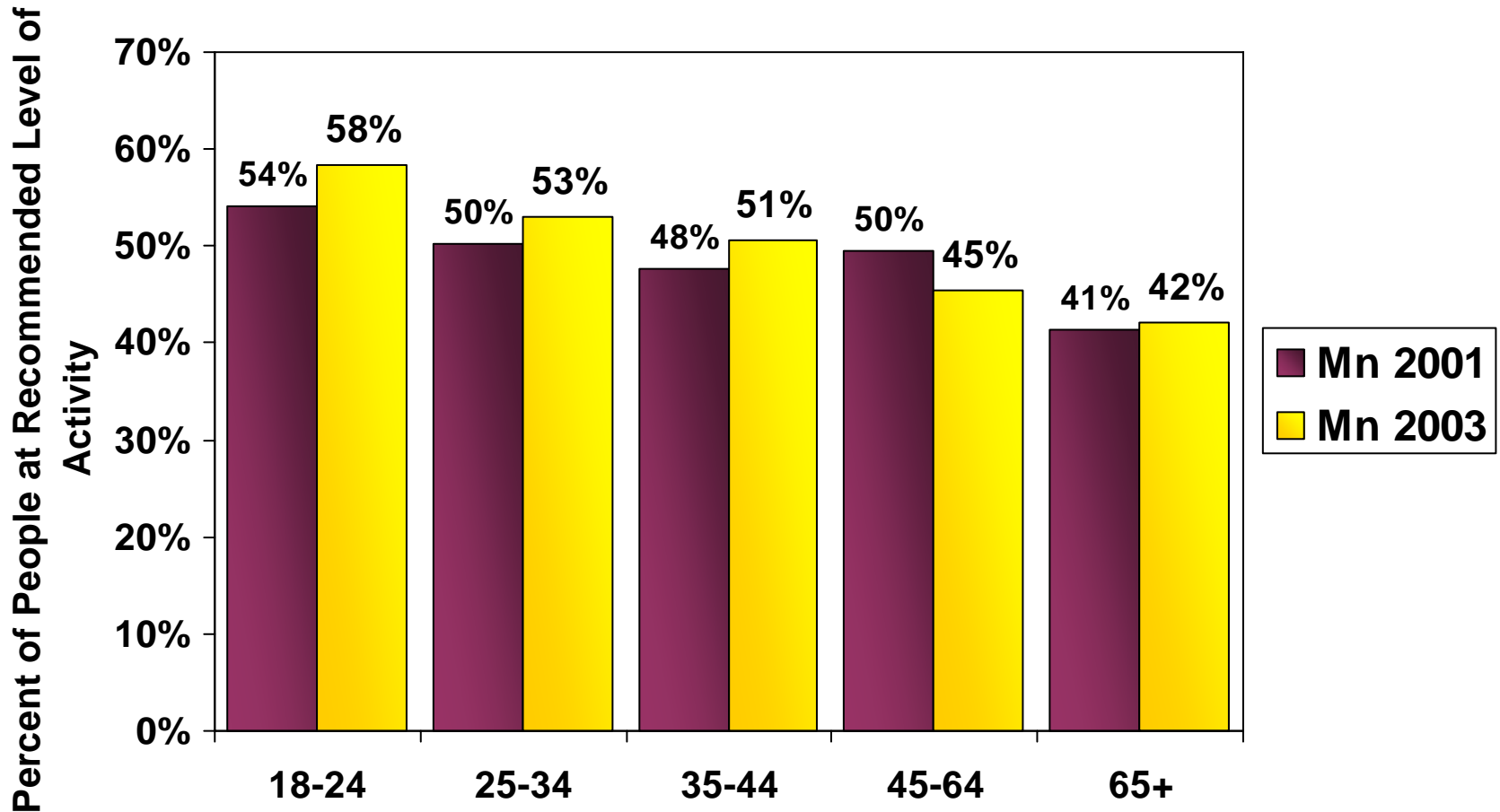
More 65+ Than School Age By 2020

Competition For Funding Will Increase



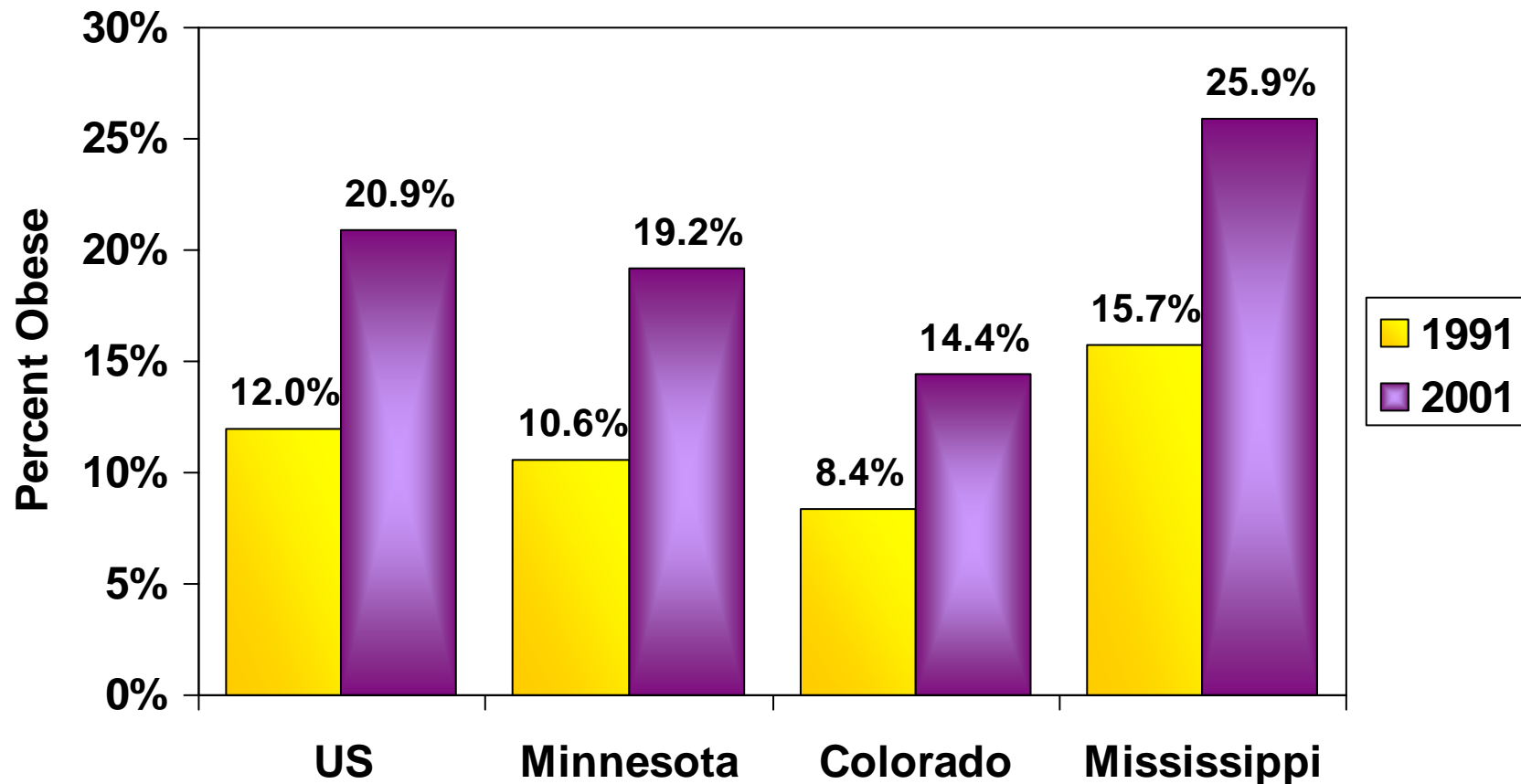
Census counts & State Demographer projection

Minnesotans Are Getting More Active, But Activity Still Falls With Age



CDC data, 2003

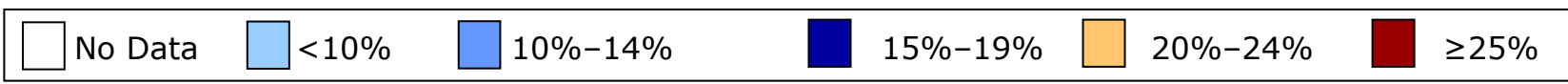
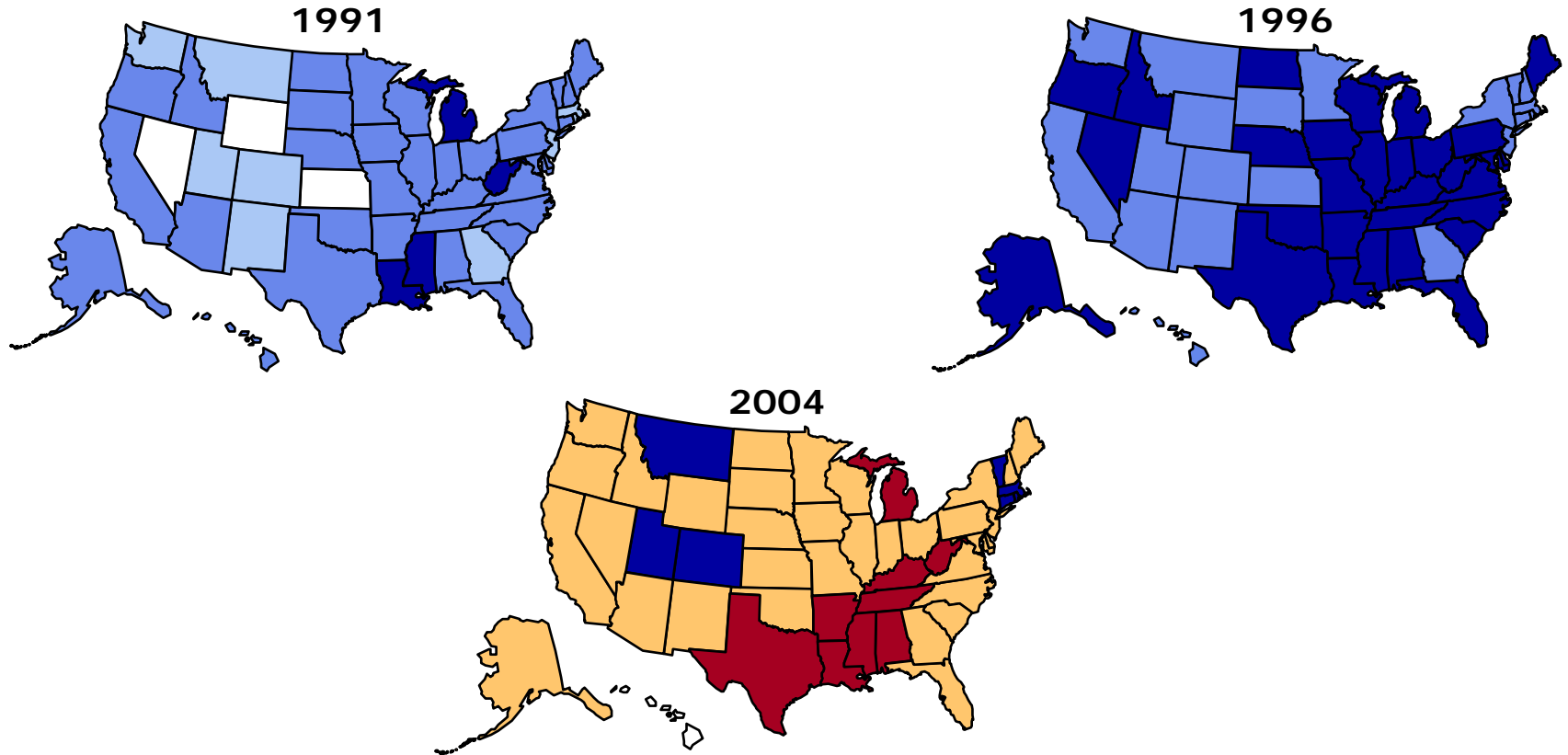
Though Healthy And Prosperous, We Are Also Gaining Weight—Obesity Threatens To Erase Many Health Successes



CDC data. Minnesota ranks 16th lowest among states

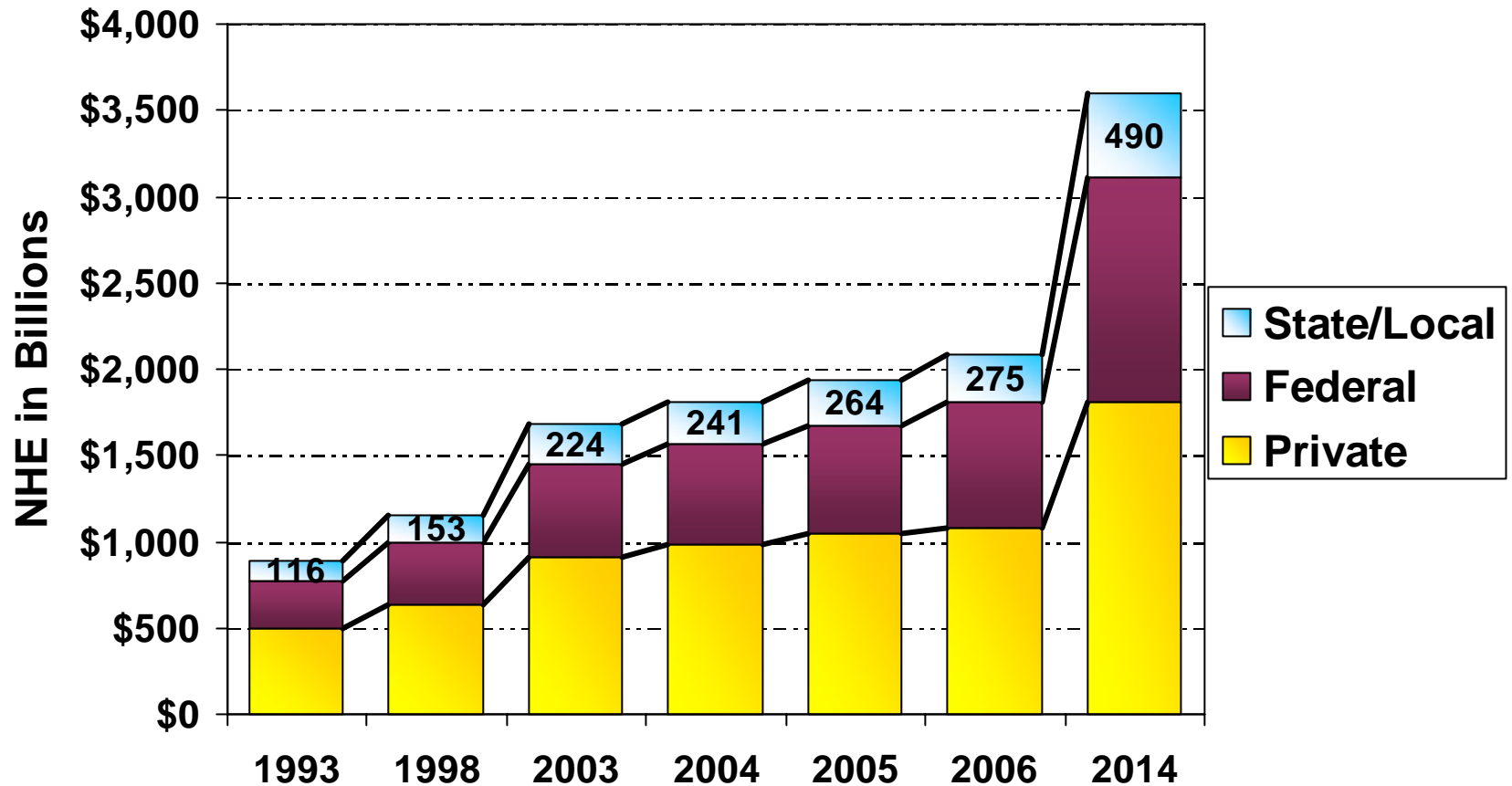
Obesity Trends* Among U.S. Adults

(*BMI ≥ 30 , or about 30 lbs overweight for 5'4" person)



Health Care Costs Projected To Increase

The Increase May Be Greater As A Result Of Increased Obesity And Less Activity



Heffler, et al., Health Affairs, Feb 2005, Center for Medicare and Medicaid Services

As We Age And Change In Other Ways

- **Our outdoor activities change and diminish**
- **Our understanding of each other may change**
- **Our levels of physical activity will diminish**
- **Our waistlines increase**
- **Renewed outdoor activity and enjoyment of our natural resources may be critical to the quality of our future**