

# POPULATION NOTES

June 1995  
OSD 95-76

## POPULATION GROWTH IN MINNESOTA ACCELERATES

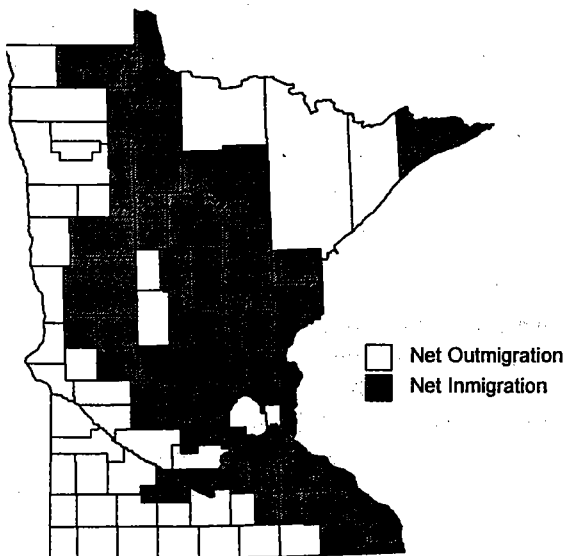
James Hibbs

The population of Minnesota expanded by 139,400 between 1990 and 1993, making the state the fastest-growing in the Midwest. The 3.2 percent growth rate for the three-year period signals that Minnesota is growing much faster than it did during the 1980s. The population change is the result of two factors: natural increase—births minus deaths—and migration. For the past 40 years, Minnesota has had a stable population compared with other states. More people have moved out of the state than in, but relatively few have moved in either direction; natural increase has been the principal source of Minnesota's growth. However, since the 1990 census, the historical pattern appears to be changing.

### Population at a Glance...

- Minnesota is the fastest-growing state in the Midwest.
- The most rapid population growth is in the suburban and outlying communities of Minnesota's metropolitan areas.
- The rural population is expanding once again after suffering substantial losses during the 1980s.
- Washington County is the fastest-growing county in the state.
- Many of the 30 counties that have lost population since 1990 are located along the western and southern borders of the state.
- Coon Rapids led all cities in population growth.

Net Migration 1990-93



### Migration Is Playing a Larger Role

Migration added 44,800 people to the state since 1990 and is assuming an increasingly important role in the state's growth. Forty-six of Minnesota's 87 counties experienced net in-migration during the past three years. Counties surrounding the Twin Cities and Rochester and in north-central Minnesota had the highest rates of net in-migration. During the same period, more people moved out of than into the agricultural areas in the south and west, the mining and lumbering areas of

**MN** PLANNING

northeastern Minnesota, and Hennepin and Ramsey counties.

Minnesota recorded about 199,500 births between April 1, 1990, and April 1, 1993. During the same period, approximately 104,900 deaths were reported. The difference, or natural increase, was about 94,600 people. The highest rates of natural increase are found in the Twin Cities suburbs and the St. Cloud and Rochester areas, reflecting the large number of young families in these areas. The lowest rates of natural increase are found in southwestern Minnesota and some north-central counties—areas with a high proportion of elderly residents. Fifteen counties recorded more deaths than births between 1990 and 1993.

### Rural Population Growth Resumes

Nearly 72 percent of Minnesotans live in an urban area. The urban population is comprised of those who live in an “urbanized area,” which includes the central cities and their densely settled suburbs, and in cities with 2,500 or more people located outside the urbanized areas. The latter cities are also identified as “other urban” areas. The rural population is that portion of the population not classified as urban. Metropolitan areas have a large population nucleus with adjacent communities that are highly integrated economically and socially; metropolitan areas encompass both urban and rural places.

Growth patterns since 1990 are different from those of the 1980s. Most notable is the shift from loss to growth in the rural areas of the state. Although the most rapid population growth continues to be in the suburban and outlying communities of Minnesota’s

metropolitan areas, growth has slowed in suburban areas and accelerated in “other urban” areas.

Population growth is not distributed evenly throughout the urban and rural areas of the state. Several Twin Cities suburbs have lost population since 1990. The urban centers located outside the urbanized areas but within the metropolitan areas are the fastest-growing places in the state, surpassing even the suburbs. Examples of these centers include Elk River, Buffalo, Waconia, New Prague, Stillwater and Forest Lake. The rural areas of the metropolitan counties also are growing rapidly. Since 1990, the rural population in metropolitan counties increased by 4.5 percent, while the rural population in nonmetropolitan counties rose 0.9 percent. Rural growth in the nonmetropolitan counties is concentrated in north-central Minnesota. The rural population declined in 36 counties, particularly in the farming areas of southern and western Minnesota.

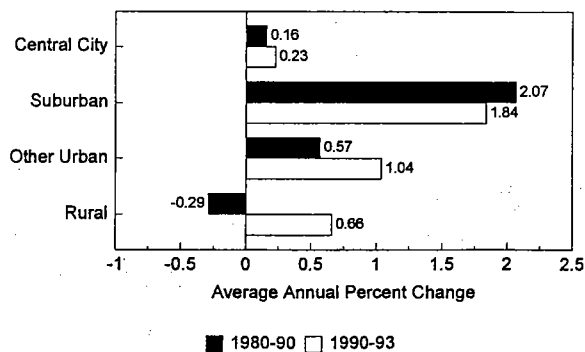
The six central cities in Minnesota grew slightly faster between 1990 and 1993 than they did during the 1980s. Only Rochester exceeded the state growth rate of 3.2 percent. Moorhead and St. Cloud increased slightly, while Duluth, Minneapolis and St. Paul showed essentially no change since 1990.

The number of households in Minnesota rose by 62,300, or 3.8 percent, between 1990 and 1993. The number of persons per household dropped slightly from 2.58 in 1990 to 2.57 in 1993. As with the population, the fastest household growth was in suburban and “other urban” areas.

### Rochester Area Leads Metropolitan Growth

The number of metropolitan counties in Minnesota increased to 18 after the 1990 census. Polk County was added to the Grand Forks, North Dakota-Minnesota, Metropolitan Statistical Area, and Houston County was added to the La Crosse, Wisconsin-Minnesota, MSA. In addition, Sherburne County was shifted from the St. Cloud MSA to the Minneapolis-St. Paul MSA. Nearly seven of every 10 Minnesotans now live in a metropolitan area. The metropolitan population went up by 4.1 percent between 1990 and 1993, while the nonmetropolitan population grew by 1.3 percent. The rate of household growth was 4.5 percent in the metropolitan areas and 2.2 percent in the nonmetropolitan areas. As noted, much of the growth in the metropolitan areas occurred in suburban and outlying communities.

Population Change by Place of Residence



## Minnesota's Metropolitan Areas: 1993

Metropolitan Statistical Area (MSA)	Population			Households		
	1990 Census	1993 Estimate	% Change 1990-93	1990 Census	1993 Estimate	% Change 1990-93
<b>DULUTH-SUPERIOR (1)</b>	198,213	198,249	0.0	78,901	79,592	0.9
St. Louis County						
Duluth City	85,493	85,388	-0.1	34,563	34,872	0.9
Suburbs	15,118	15,555	2.9	5,223	5,438	4.1
Balance of Area	97,602	97,306	-0.3	39,115	39,282	0.4
<b>FARGO-MOORHEAD (1)</b>	50,422	51,261	1.7	17,490	18,122	3.6
Clay County						
Moorhead City	32,295	32,937	2.0	11,063	11,539	4.3
Suburbs	4,449	4,587	3.1	1,542	1,609	4.3
Balance of Area	13,678	13,737	0.4	4,885	4,974	1.8
<b>GRAND FORKS (1)</b>	32,589	32,673	0.3	12,026	12,119	0.8
Polk County						
Suburbs	8,658	8,884	2.6	3,159	3,268	3.5
Balance of Area	23,931	23,789	-0.6	8,867	8,851	-0.2
<b>LA CROSSE (1)</b>	18,497	18,772	1.5	6,844	7,008	2.4
Houston County						
Suburbs	5,738	5,929	3.3	2,119	2,208	4.2
Balance of Area	12,759	12,843	0.7	4,725	4,800	1.6
<b>MINNEAPOLIS-ST. PAUL (1)</b>	2,455,760	2,563,794	4.4	931,491	975,000	4.7
Anoka, Carver, Chisago, Dakota, Hennepin, Isanti, Ramsey, Scott, Sherburne, Washington and Wright counties						
Minneapolis City (2)	368,383	367,924	-0.1	160,682	160,890	0.1
St. Paul City (2)	272,235	272,243	0.0	110,249	110,430	0.2
Suburbs (2)	1,451,029	1,532,366	5.6	539,442	572,173	6.1
Balance of Area	364,113	391,261	7.5	121,118	131,507	8.6
<b>ROCHESTER</b>	106,470	113,237	6.4	40,058	43,120	7.6
Olmsted County						
Rochester City	70,729	76,060	7.5	27,902	30,390	8.9
Suburbs	12,330	12,719	3.2	4,162	4,316	3.7
Balance of Area	23,411	24,458	4.5	7,994	8,414	5.3
<b>ST. CLOUD</b>	149,509	155,563	4.0	50,820	53,674	5.6
Benton and Stearns counties						
St. Cloud City (3)	43,566	43,732	0.4	16,267	16,805	3.3
Suburbs	30,710	33,887	10.3	10,686	11,985	12.2
Balance of Area	75,233	77,944	3.6	23,867	24,884	4.3
<b>METROPOLITAN MINNESOTA</b>	3,011,460	3,133,549	4.1	1,137,630	1,188,635	4.5
<b>NONMETROPOLITAN MINNESOTA</b>	1,364,205	1,381,569	1.3	510,344	521,631	2.2

- (1) Includes only the Minnesota portion of these metropolitan areas
- (2) Estimates prepared by the Metropolitan Council
- (3) Excluding Sherburne County portion of St. Cloud in the Minneapolis-St. Paul MSA

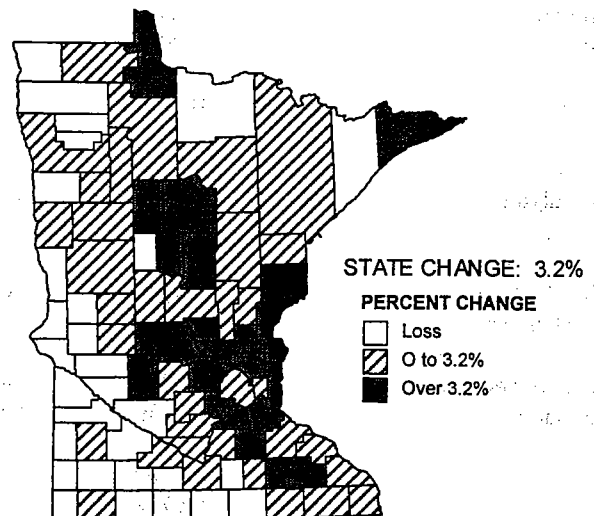
Rochester was the fastest-growing MSA from 1990 to 1993 with a population increase of 6.4 percent; its growth rate was much faster than in the 1980s. The 11-county Twin Cities and the St. Cloud MSAs also expanded during the period with population increases of 4.4 percent and 4.0 percent, respectively. Growth accelerated in the St. Cloud MSA, while it slowed slightly in the Twin Cities area. The population of the Duluth MSA has been stable since the 1990 census, a big change from the previous decade, when there were substantial losses.

Close behind were Scott and Sherburne counties with population increases of 11.1 percent and 11.0

### Washington County Population Mushrooms

The 10 fastest-growing counties in Minnesota all are located in metropolitan areas. All but Benton and Olmsted counties are located in the Twin Cities MSA. The population of Washington County increased 12.1 percent between 1990 and 1993, making it the fastest-growing county in Minnesota.

County Population Change



County Population And Household Estimates: 1993

County	Population			Households		
	1990 Census	1993 Estimate	% Change 1990-93	1990 Census	1993 Estimate	% Change 1990-93
Minnesota	4,375,665	4,515,118	3.2	1,647,974	1,710,266	3.8
Aitkin	12,425	12,593	1.4	5,126	5,254	2.5
Anoka	243,641	261,814	7.5	82,437	89,108	8.1
Becker	27,881	28,383	1.8	10,477	10,726	2.4
Beltrami	34,384	35,360	2.8	11,870	12,367	4.2
Benton	30,185	32,306	7.0	10,935	11,887	8.7
Big Stone	6,285	6,089	-3.1	2,463	2,391	-2.9
Blue Earth	54,044	54,473	0.8	19,277	19,767	2.5
Brown	26,984	27,299	1.2	10,321	10,459	1.3
Carlton	29,259	30,003	2.5	10,842	11,199	3.3
Carver	47,915	52,758	10.1	16,601	18,445	11.1
Cass	21,791	22,562	3.5	8,302	8,662	4.3
Chippewa	13,228	13,116	-0.8	5,245	5,231	-0.3
Chisago	30,521	33,255	9.0	10,551	11,575	9.7
Clay	50,422	51,261	1.7	17,490	18,122	3.6
Clearwater	8,309	8,382	0.9	3,064	3,132	2.2
Cook	3,868	4,015	3.8	1,632	1,719	5.3
Cottonwood	12,694	12,649	-0.4	5,060	5,072	0.2
Crow Wing	44,249	46,512	5.1	17,204	18,232	6.0
Dakota	275,189	298,679	8.5	98,271	107,094	9.0
Dodge	15,731	16,275	3.5	5,538	5,770	4.2
Douglas	28,674	29,544	3.0	10,988	11,414	3.9
Faribault	16,937	16,685	-1.5	6,772	6,717	-0.8
Fillmore	20,777	20,812	0.2	7,822	7,900	1.0
Freeborn	33,060	33,026	-0.1	13,029	13,098	0.5
Goodhue	40,690	41,681	2.4	15,198	15,759	3.7
Grant	6,246	6,196	-0.8	2,454	2,444	-0.4
Hennepin	1,032,431	1,051,426	1.8	419,060	428,556	2.3
Houston	18,497	18,772	1.5	6,844	7,008	2.4
Hubbard	14,939	15,517	3.9	5,781	6,066	4.9
Isanti	25,921	27,567	6.4	8,810	9,490	7.7
Itasca	40,863	41,565	1.7	15,461	15,875	2.7
Jackson	11,677	11,569	-0.9	4,560	4,538	-0.5
Kanabec	12,802	13,102	2.3	4,753	4,900	3.1
Kandiyohi	38,761	40,044	3.3	14,298	14,938	4.5
Kittson	5,767	5,626	-2.4	2,274	2,232	-1.8
Koochiching	16,299	15,811	-3.0	6,025	6,075	0.8
Lac Qui Parle	8,924	8,744	-2.0	3,505	3,455	-1.4
Lake	10,415	10,363	-0.5	4,242	4,245	0.1
Lake of the Woods	4,076	4,223	3.6	1,576	1,647	4.5
Le Sueur	23,239	23,695	2.0	8,468	8,716	2.9
Lincoln	6,890	6,783	-1.6	2,704	2,692	-0.4
Lyon	24,789	24,979	0.8	9,073	9,296	2.5

County Population And Household Estimates: 1993 (continued)

County	Population			Households		
	1990 Census	1993 Estimate	% Change 1990-93	1990 Census	1993 Estimate	% Change 1990-93
McLeod	32,030	32,824	2.5	11,815	12,242	3.6
Mahnomen	5,044	5,103	1.2	1,805	1,854	2.7
Marshall	10,993	10,819	-1.6	4,194	4,164	-0.7
Martin	22,914	22,832	-0.4	9,129	9,156	0.3
Meeker	20,846	21,056	1.0	7,651	7,776	1.6
Mille Lacs	18,670	19,164	2.6	6,911	7,131	3.2
Morrison	29,604	30,280	2.3	10,399	10,717	3.1
Mower	37,385	37,391	0.0	15,028	15,129	0.7
Murray	9,660	9,613	-0.5	3,758	3,751	-0.2
Nicollet	28,076	28,858	2.8	9,478	9,895	4.4
Nobles	20,098	20,192	0.5	7,683	7,846	2.1
Norman	7,975	7,826	-1.9	3,118	3,068	-1.6
Olmsted	106,470	113,237	6.4	40,058	43,120	7.6
Otter Tail	50,714	51,309	1.2	19,510	19,910	2.1
Pennington	13,306	13,243	-0.5	5,173	5,183	0.2
Pine	21,264	22,006	3.5	7,577	7,920	4.5
Pipestone	10,491	10,380	-1.1	4,078	4,060	-0.4
Polk	32,589	32,673	0.3	12,026	12,119	0.8
Pope	10,745	10,755	0.1	4,135	4,161	0.6
Ramsey	485,783	491,306	1.1	190,506	193,468	1.6
Red Lake	4,525	4,454	-1.6	1,730	1,712	-1.0
Redwood	17,254	17,250	0.0	6,554	6,600	0.7
Renville	17,673	17,535	-0.8	6,790	6,737	-0.8
Rice	49,183	51,122	3.9	16,347	17,162	5.0
Rock	9,806	9,739	-0.7	3,754	3,763	0.2
Roseau	15,026	15,473	3.0	5,415	5,627	3.9
St. Louis	198,213	198,249	0.0	78,901	79,592	0.9
Scott	57,846	64,242	11.1	19,367	21,676	11.9
Sherburne	41,945	46,574	11.0	13,643	15,240	11.7
Sibley	14,366	14,402	0.3	5,323	5,391	1.3
Stearns	119,324	123,257	3.3	39,885	41,787	4.8
Steele	30,729	31,451	2.3	11,342	11,773	3.8
Stevens	10,634	10,527	-1.0	3,823	3,819	-0.1
Swift	10,724	10,650	-0.7	4,268	4,234	-0.8
Todd	23,363	23,370	0.0	8,589	8,653	0.7
Traverse	4,463	4,345	-2.6	1,778	1,742	-2.0
Wabasha	19,744	20,093	1.8	7,286	7,474	2.6
Wadena	13,154	13,137	-0.1	4,978	4,997	0.4
Waseca	18,079	17,777	-1.7	6,649	6,713	1.0
Washington	145,858	163,500	12.1	49,232	55,761	13.3
Watonwan	11,682	11,592	-0.8	4,530	4,523	-0.2
Wilkin	7,516	7,380	-1.8	2,805	2,771	-1.2
Winona	47,828	48,396	1.2	16,930	17,407	2.8
Wright	68,710	72,673	5.8	23,013	24,587	6.8
Yellow Medicine	11,684	11,549	-1.2	4,607	4,582	-0.5

**Cities By Size Of Place: 1993**

Size Category	No. of Cities	1993 Population	1990-93 Population Change	No. Losing Population
100,000 or more	2	640,167	-451	1
50,000-99,999	8	526,828	25,326	1
25,000-49,999	20	709,444	31,823	4
10,000-24,999	48	758,294	36,193	5
5,000-9,999	41	291,034	9,995	8
2,500-4,999	70	241,182	8,404	13
1,000-2,499	137	220,519	6,200	36
500-999	149	103,526	1,330	50
250-499	136	49,414	491	56
Less than 250	245	33,832	-242	159
<b>Total</b>	<b>856</b>	<b>3,574,240</b>	<b>119,069</b>	<b>333</b>

percent, respectively. A total of 21 counties grew faster than the state average of 3.2 percent. Among the fastest-growing nonmetropolitan counties were Crow Wing, Rice, Hubbard, Cook, Lake of the Woods, Cass, Pine, Dodge and Kandiyohi. In several counties with American Indian reservations, the development of gambling casinos appears to have encouraged population growth or moderated population losses.

Although Hennepin County grew at a relatively slow rate of 1.8 percent between 1990 and 1993, it added 18,995 residents, the second largest gain of any Minnesota county. Dakota County led the state with a population increase of 23,490. The populations of Anoka and Washington counties also rose substantially.

Thirty counties lost population between 1990 and 1993. This is an improvement from the last decade, when 49 counties lost population. Many of the counties whose population decreased are along the western and southern borders of the state. The rate

of loss in these counties generally is slower than it was between 1980 and 1990. Koochiching County had the largest population loss. Much of the loss may be attributed to the timing of a paper mill construction project in International Falls: a large number of the construction workers who were counted in the 1990 census left the county when the project was completed later that year.

The counties with a high rate of household growth also tend to have rapid population growth. The number of households in Washington County increased by 13 percent between 1990 and 1993. Household growth exceeded 11 percent in Scott, Sherburne and Carver counties. Twenty counties located along the western and southern borders of the state lost households since the 1990 census.

The trend in most counties is toward smaller households, but average household size varies greatly from one county to another. In 1993, average household size ranged from 2.96 persons per household in Sherburne County to 2.31 persons per household in Cook County. With a few exceptions, the counties with the largest average household size ring the Twin Cities and St. Cloud areas. Counties with the lowest average household size tend to be those with large elderly or young adult populations, such as Hennepin; the counties of western and southwestern Minnesota; and certain northern counties that are popular retirement destinations.

**New Cities Created Since the 1990 Census**

Minnesota had 856 cities in 1993. Since the 1990 census, Otsego Township in Wright County, Oak Grove Township in Anoka County and Bass Brook Township in Itasca County were all incorporated as cities. The city of Island View in Koochiching

**Minnesota's Largest Cities**

1993 Rank	1990 Rank	City	County	1993 Population	1990 Population	Percent Change
1	1	Minneapolis	Hennepin	367,924	368,383	-0.1
2	2	St. Paul	Ramsey	272,243	272,235	0.0
3	3	Bloomington	Hennepin	86,918	86,335	0.7
4	4	Duluth	St. Louis	85,388	85,493	-0.1
5	5	Rochester	Olmsted	76,060	70,729	7.5
6	7	Coon Rapids	Anoka	58,833	52,978	11.1
7	6	Brooklyn Park	Hennepin	58,125	56,381	3.1
8	9	Plymouth	Hennepin	55,137	50,889	8.3
9	8	Burnsville	Dakota	53,363	51,288	4.0
10	12	Eagan	Dakota	53,004	47,409	11.8

### Fastest-Growing Cities in Minnesota

1993 Rank	City	County	1990 Population	1993 Population	Percent Change
1	Isanti	Isanti	1,228	1,857	51.2
2	Hanover	Hennepin, Wright	787	1,033	31.3
3	Savage	Scott	9,906	12,889	30.1
4	Woodbury	Washington	20,075	25,875	28.9
5	Centerville	Anoka	1,633	2,095	28.3
6	Lino Lakes	Anoka	8,807	11,193	27.1
7	Albertville	Wright	1,251	1,547	23.7
8	Becker	Sherburne	902	1,106	22.6
9	Rosemount	Dakota	8,622	10,478	21.5
10	Zimmerman	Sherburne	1,350	1,638	21.3
11	Lakeville	Dakota	24,854	30,149	21.3
12	Oakdale	Washington	18,377	22,192	20.8
13	Victoria	Carver	2,354	2,833	20.3
14	Andover	Anoka	15,216	18,304	20.3
15	St. Joseph	Stearns	3,349	3,987	19.1
16	North Branch	Chisago	1,867	2,209	18.3
17	Moose Lake	Carlton	1,377	1,614	17.2
18	Byron	Olmsted	2,441	2,854	16.9
19	Chaska	Carver	11,339	13,012	14.8
20	Medina	Hennepin	3,096	3,534	14.1
21	Chanhausen	Carver, Hennepin	11,732	13,388	14.1
22	Hugo	Washington	4,417	5,030	13.9
23	Ramsey	Anoka	12,408	14,081	13.5
24	Howard Lake	Wright	1,343	1,523	13.4
25	Sauk Rapids	Benton	7,823	8,835	12.9

Note: Includes only cities with at least 1,000 residents in 1993

County was dissolved. The fastest-growing cities tend to be those with populations between 10,000 and 100,000. Nearly 62 percent of Minnesota cities have fewer than 1,000 residents. The smaller the city is, the higher the probability that it lost population since 1990. However, the number of cities that lost population between 1990 and 1993 is substantially lower than during the 1980s.

Ten Minnesota cities have more than 50,000 residents. All but two (Duluth and Rochester) are located in the Twin Cities MSA. Eagan replaced St. Cloud on the list of the 10 largest cities.

Coon Rapids had the largest population increase of any city in the state: it added 5,855 residents between 1990 and 1993. Woodbury was close behind with a population increase of 5,800. Other cities with population growth exceeding 5,000 are Eagan, Rochester and Lakeville.

The fastest-growing cities in Minnesota are generally suburbs or bedroom communities for regional centers. The 14 fastest-growing cities with at least 1,000 residents are all located in the Twin Cities MSA. Leading this group is Isanti, which

grew by 51.2 percent between 1990 and 1993. Other Twin Cities area cities with rapid growth include Hanover, Savage, Woodbury, Centerville, Lino Lakes and Albertville. Fast-growing cities outside the Twin Cities area include St. Joseph, Sauk Rapids and Sartell in the St. Cloud area, Byron in the Rochester area and Moose Lake in Carlton County. Some of these cities have increased their population by annexing land from surrounding townships.

#### Technical Notes

Urban and rural definitions in this report correspond closely to those used by the Census Bureau. "Urban" refers to all people living in cities of 2,500 or more or to people living in smaller cities and townships within densely settled urbanized areas. "Rural" refers to the remainder of the population. "Central cities" means the six large cities (Minneapolis, St. Paul, Duluth, Rochester, St. Cloud and Moorhead) within the seven metropolitan areas. "Suburban" corresponds to the Census Bureau's "urban fringe" category. The Census Bureau, however, classifies some cities and townships as partly urban and partly rural. In this report, any place characterized by the Census Bureau as partly urban is considered entirely

urban. The effect of this difference on comparability with the census is negligible. "Other urban" means cities of 2,500 people or more outside the urbanized areas of the state. These urban places are found both inside and outside metropolitan areas. Urban is not synonymous with metropolitan, and rural is not the same as nonmetropolitan. Rural populations are found within most metropolitan counties, and many urban places are in nonmetropolitan counties.

A metropolitan statistical area, as defined by the U.S. Office of Management and Budget, is a large population nucleus and adjacent communities that have a high degree of economic and social integration with the nucleus. Each area has one or more central counties containing the area's main population concentration. An MSA may also include outlying counties that are closely integrated with the central counties. Metropolitan counties frequently contain rural as well as urbanized areas. The population living outside MSAs constitutes the nonmetropolitan population. The nonmetropolitan population has both urban and rural components.

A household includes all the people who occupy a housing unit. A housing unit is a house, an apartment, a group of rooms or a single room occupied as a separate living quarters or, if vacant, intended for occupancy as a separate living quarters. In other words, the number of households always equals the number of occupied

*Population Notes* is published periodically by Demography, Minnesota Planning, 300 Centennial Office Building, 658 Cedar, St. Paul, MN 55155

For more information or copies:

Census Help Line (612)296-2557

TDD (612)297-5353 or 1-(800)627-3539

Minnesota Relay Service

Upon request, *Population Notes* will be made available in an alternative format, such as Braille, large print or audiotape.

Printed on recycled and recyclable paper with soy ink.

housing units. Households may be a single family, one person living alone, two or more families living together or any other group of related or unrelated people who share living quarters.

Population and household estimates for counties, cities and townships within the seven-county Twin Cities area (Anoka, Carver, Dakota, Hennepin, Ramsey, Scott, and Washington counties) are prepared by the Metropolitan Council.



658 CEDAR STREET  
ST. PAUL, MN 55155

Bulk Rate  
U.S. Postage  
PAID  
Permit No. 171  
St. Paul, MN

**POPULATION  
NOTES**